







SIG Roofing Introduction

As the largest distributor of natural slate in the world, the SIG Group supports Europe's largest Markets, including the UK, Ireland, France, and Germany.

For over 30 years, SIG Roofing has been the 'go-to' distributor of natural slate from a range, largely sourced directly from the quarries.

Quality is at the forefront of everything we do, so we work closely with our producers to ensure that we supply slate that not only meets your performance criteria, but also meets your aesthetic requirements within budget.

We know from our extensive experience that no two projects are alike, so we ensure that every slate is carefully selected to match your roofing requirements and geographical area.

Introduction to CUPA Natural Slate

As the largest supplier of Natural Slate in the world, CUPA Pizaras have built an enviable reputation for quality and consistency.

Since 2021 SIG Roofing are the distributors and partners to CUPA in the Irish market. CUPA have sought to bring simplicity to the market through the clarity, consistency and efficiency of their products and services. CUPA have been able to build long-lasting relationships with their customers thanks to the transparency they offer through test certificates for contractors, self-builders and architects.

CUPA Pizaras carefully manages every single step of the journey, from the quarry to the roof. This monitoring and careful selection ensures that your slate roof is not only aesthetically beautiful and strong, but that you also have consistency and traceability that's second to none.

CUPA Slate stands for quality. The way CUPA ensure Natural Slate quality is through an in-depth knowledge of their quarries. 1 out of every 2 pieces of slate installed in the world comes from CUPA PIZARRAS, with more than 100 years of history, are now the world leader in the production and distribution of natural slate.

By choosing SIG Roofing and CUPA, you're choosing to work with people who have immense pride in, and in-depth knowledge of Natural Slate for roofing.

Warranty Overview:

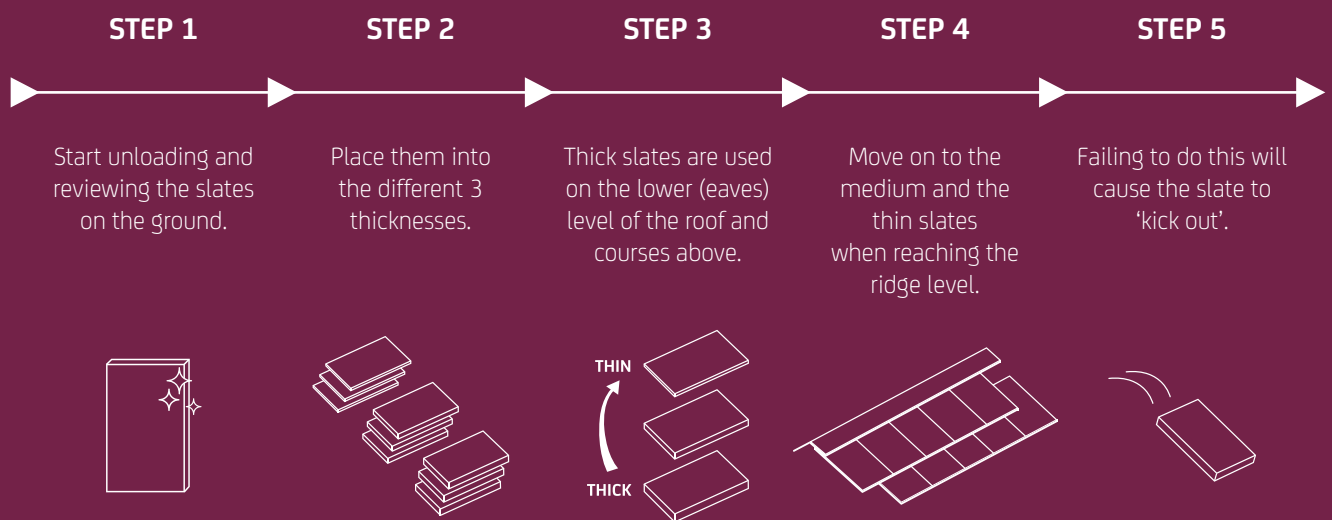
CUPA Natural Slates have been carefully selected by experienced specialists to satisfy their customer's roofing requirements. Because of the traceability that CUPA rigorously enforce, CUPA Pizaras can provide a product replacement warranty directly to the end-user; giving the peace of mind you would expect with the leading slate manufacturer. The warranty is in addition to, and does not affect, your statutory rights. Full terms and conditions of the warranty are available on request.

Please remember to keep the pallet IDs.

We recommend you take a quick snap or peel them before starting the process as you can now request a Guarantee Certificate through the new online Tool" <https://www.cupapizaras.com/uk/resource-centre/faqs/guarantee-certificate/>

CUPA PIZARRAS

Sorting and grading natural slate step by step



R Selection

Nominal thickness: 3.5 – 5mm

Our **R** selection of natural slate roofing is the result of an extraordinarily rigorous classification process that is only passed by slates of great flatness and very regular thickness.

Our CUPA R slates are considered to be the best natural slates produced in the world by thousands of architects, installers and individuals and are used in projects where a homogeneous result is sought for a perfect roof.

H Selection

Nominal thickness: 3.5 – 5mm

The **H** natural slate roofing selection features high quality, permitting slight variations in slate thickness and flatness.

The technical characteristics of the slates – their strength and durability – are the same as in the R selection, as they are produced from the same natural slate blocks. These slates are chosen by experienced installers who are able to adapt the product to the roof and guarantee a homogeneous result.

Natural Selection

Nominal thickness: 3.5 – 5mm

The **NATURAL** slate roofing selection is made up of slates that allow greater variations in thickness and flatness. The technical characteristics of the slates are the same as in the superior selections, as they are produced from the same natural slate blocks.

The **NATURAL** selection competes on cost with artificial products, but keeps the long life expectancy and low environmental impact that characterises natural slate.

HEAVY Selection

Nominal thickness: 7 – 9mm

Our **HEAVY** natural slate roofing selection is made up exclusively of thick slates, of over 7 millimetres, characterised by their exceptional durability in any circumstance or climatic conditions.

While they come from the same blocks, unlike the other selections, the **HEAVY** selection is produced looking for greater thickness and more texture in the natural slate. The result is a slate with a crafted appearance and unmatched strength that gives a roof a unique personality.

CUPA 2



*Non-carbonated slate formed by tectonic compression.
Dark grey slate with thin laminations and a smooth surface.*



Colour
Grey



Surface
Smooth

Non-carbonated slate formed by tectonic compression.
Dark grey slate with thin laminations and a smooth surface.

Split to an average thickness of 3.5 mm, 5 mm, 6 mm and 7.5 mm.

Note: As this is a natural product it is possible that there will be a shade variation.

CUPA 2 is sourced from Riodelas mina, Carballeda de Valdeorras (Ourense) Spain. In Ireland, CUPA R2 Excellence slate tends to be used for high specification houses.



Riodelas mina, Carballeda de Valdeorras (Ourense) Spain.



Operating since 1972.



Sizes: 20x20 - 60x45 cm
Thickness: 3.5 - 5 - 6 mm



Formats



Selections



Technical specifications

ABSORPTION	CARBONATE NON CARBONATED	MOR CHARACTERISTIC
< 0,4% Code : W1 (< 0,6%)	≤ 0,2% Fulfil (< 2%)	Longitudinal ≥ 50 MPA
SO ₂ EXPOSURE TEST	THERMAL CYCLE TEST	FREEZE THAW TEST
S1	T1	Fulfil < 0,6%

International certifications



European Standard: EN 12326
French Specifications: NF44/03 - N°33235
Belgian Specifications: ATG/H652
British Standard: BS 680 Part 2

HEAVY 3

A ROOF FOR LIFE



*Non-carbonated slate formed by tectonic compression.
Dark grey slate with thin laminations and a smooth surface.*

CUPA Heavy 3 slate comes from the quarry nº 3 in San Pedro de Trones (Leon) in northern Spain, which has been in operation since 1892 and produces around 25,000 tons every year.

Heavy 3 is a blue black slate with a slightly gritty texture, and in some samples well defined parallel lines are clearly visible on the cleavage surfaces.

It is produced in two thicknesses, 3.5mm and 7-8mm; the thicker variant being the preferred choice in Scotland. The extra thickness and weight give it strength to withstand the high wind speeds and driving rain.

The real value of Heavy 3 lies in its natural properties:

- ▶ Impermeable to water
- ▶ Weather and UV resistant
- ▶ Not affected by chemicals or pollutants
- ▶ Not damaged by fungi, moss, insects, animals...
- ▶ Strong while weighting substantially less than man-made roofing tiles
- ▶ Non-combustible

Heavy 3 Natural Slates are available in the following sizes:

- ▶ 30x20cm (12x8")
 - ▶ 35x20cm (14x8")
 - ▶ 40x20cm (16x8")
 - ▶ 40x25cm (16x10")
 - ▶ 50x25cm (20x10")
- Heavy 3 slate is quarried from the CUPA PIZARRAS No3 quarry in San Pedro de Trones (León) in northern Spain. This quarry has been in operation since 1892 and produces around 25,000 tonnes each year.
 - The slate is blue black with a slightly gritty texture, and in some samples well defined parallel lines are clearly visible on the cleavage surfaces.
 - Another obvious feature of the slate is the presence of metallic cubes approximately 2mm in size. Sometimes these cubes are randomly distributed throughout the slate, while in other cases they are concentrated in discrete bedding layers. These cubes are of iron sulphide, known as pyrite.



CUPA 5



*Non-carbonated slate formed by tectonic compression.
Dark grey slate with a riven surface.*



Colour
Grey



Surface
Riven

Non-carbonated slate formed by tectonic compression.
Dark grey slate with a riven surface.

Split to an average thickness of 5 mm, 6.5 mm, 7.5 mm
and 9 mm

CUPA 5 slate is extracted from the Valcadal Quarry in
Ourense, northern Spain, and is dark grey with a riven
texture that brings a unique style to buildings.

With its distinctive colour and riven texture, CUPA R5
Excellence slate has been covering some remarkable
roofing projects in the Ireland and around the world.



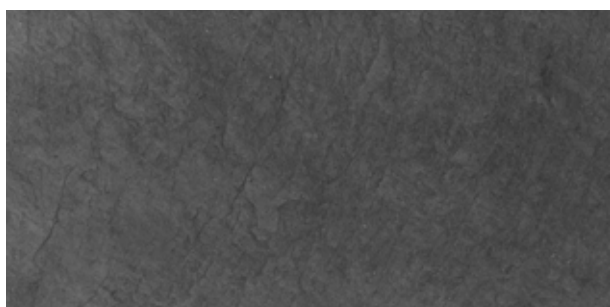
Quarry Valdacal. Puzmazán (Ourense) Spain.



Operating since 1971.



Sizes: 20x20 - 60x45 cm
Thickness: 5 - 6.5 - 7.5 - 9 mm



Formats



Selections



Technical specifications

ABSORPTION	CARBONATE NON CARBONATED	MOR CHARACTERISTIC
0,16% Code : W1 (< 0,4%)	0,23% Complies (< 1,5%)	Longitudinal 57 MPA Transverse 56 MPA
SO ₂ EXPOSURE TEST	THERMAL CYCLE TEST	FREEZE THAW TEST
S1	T1	Fulfil < 0,6%

International certifications



European Standard: EN 12326
French Specifications: NF02/03 - N°5275
Belgian Specifications: ATG/H848
British Standard: BS 680 Part 2

CUPA 12



*Non-carbonated slate formed by tectonic compression.
Grey slate with a smooth matt surface.*



Colour
Grey



Surface
Smooth

Non-carbonated slate formed by tectonic compression. Grey slate with a smooth matt surface. Split to an average thickness of 3,5 mm, 5 mm and 6 mm.

Note: As this is a natural product it is possible that there will be a shade variation.

CUPA 12 has the approved status from the **Snowdonia National Park**.



Quarry La Campa. Folgoso del Caurel (Lugo) Spain.



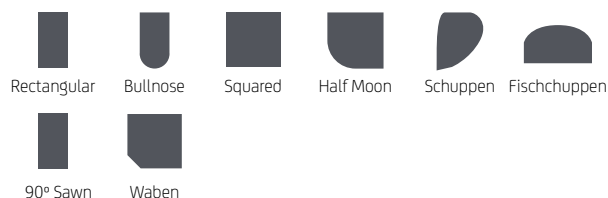
Operating since 1972.



Sizes: 20x20 - 60x45 cm
Thickness: 3,5 - 5 - 6 mm



Formats



Selections

R Excellence

Technical specifications

ABSORPTION	CARBONATE NON CARBONATED	MOR CHARACTERISTIC
0,16% Code : W1 (< 0,4%)	0,23% Complies (< 1,5%)	Longitudinal 57 MPA Transverse 56 MPA
SO ₂ EXPOSURE TEST	THERMAL CYCLE TEST	FREEZE THAW TEST
S1	T1	Fulfil < 0,6%

International certifications



European Standard: EN 12326
French Specifications: NF 02/09 N° 17704
Bre Specification: BREG EN EPD000232

CUPA 50



*Non-carbonated slate formed by tectonic compression.
Deep grey slate with thin laminations and very uniform smooth surface.*

The latest addition to CUPA's wide range of natural slates is now on the market for you to buy. UK customers can now purchase the new **CUPA 50, a deep grey slate** coming from **Northern Spain** with all the benefits that buying the world leader in slate offers.

CUPA 50 natural slate comes from the acquisition of a new quarry located in Northern Spain, where the geological process has created the best natural slates in the world. The reputation of all our quarries in the area is endorsed by the test of time.

The deep grey colour of our CUPA 50, its **thin laminations** and a **uniform smooth surface** are characteristics greatly appreciated in the market. Furthermore, this new slate will be produced in **large sizes** such as 50x25cm, 50x30cm and 60x30cm.



San Vicente Quarry, Villamartín de Valdeorras (Ourense) Spain.



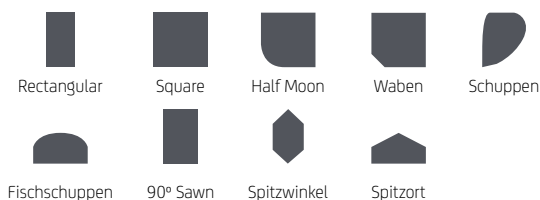
Operating since 1999.



Sizes: 20x20 - 60x45
Thickness: 3,7-5-6,5-7,5 mm



Formats



Selections



Technical specifications

ABSORPTION	CARBONATE NON CARBONATED	MOR CHARACTERISTIC
0,13% Code : W1 (< 0,6%)	0,50% Complies (< 2%)	Longitudinal 68 MPA Transversal 64 MPA
SO ₂ EXPOSURE TEST	THERMAL CYCLE TEST	FREEZE THAW TEST
S1	T1	Fulfil < 0,6%

International certifications



Nova Brazilian Natural Slate

Nova Graphite slates are quite unique in that they do not have any iron or quartz content. These slates are cost effective with a beautiful appearance.

Nova Graphite slates have a smooth surface texture and are split to an approximate thickness of 5-6mm. Due to their uniform thickness minimal grading is required, however, additional attention will be required when cutting Nova Graphite on site and to avoid excessive breakage a disc machine should be used.

Brazilian slates should be fixed using stainless hooks and appropriate nails.

Stocks

Nova Graphite slates are available from SIG Roofing centres in sizes 60x30 and 50 x25.

Guarantee

Nova Graphite slates are certified as A1, S1, T1 and conform to EN12326-1:2004 and are expected to exceed the life of the building.

A formal manufacturer backed guarantee of 30 years is given once the slates are in accordance with ICP2-2002, BS5534:2014 and national building regulations.



Vermont Heather Blue

Inhabitants of northern Wales are believed to have been the first to take advantage of slate's natural cleavage for the production of roofing slate around 1300 a.d. Over several centuries the Welsh developed a proud tradition of slate production, one that continues to this day.

In the mid 1800's Welsh immigrants brought their slate working experience to the north-eastern U.S. starting what was to become a major industry in the area.

Vermont Heather Blue slates are the colour heather and generally 4/7mm thick, riven texture surface and fixed in accordance with S.R.82 – 2017, (with reference to BS 5534) and BS 8000 part 6.

Key advantages of Vermont Heather Blue

- ▶ **Economical**
Vermont Heather Blue slate is available at a very competitive rate compared to Welsh slate.
- ▶ **EU Certification**
Vermont Heather Blue conforms to the highest standards within the BSEN 12326 achieving A1,S1,T1 classification.
- ▶ **Guarantee**
Vermont Heather Blue is supplied with a written guarantee for a period of 100 years.
- ▶ **Format**
Vermont Heather Blue are available in the following sizes - 510mmx305mm and 405mmx255mm.
- ▶ **Coverage**
Slate coverage per m² 510mm x 305mm – 15.5 no. / 505mm x 255mm – 19.0 no.



Rosemary Classic Clay Tile

The Rosemary name is synonymous with clay plain tiles, adding distinction and character to pitched roofs for over 180 years. Today, a range of single and cross-camber tiles combine the quality of hand-crafted clay with the reliability of modern machine-made techniques.

Produced from the finest Etruria Marl clay, Rosemary is offered in a range of weathered, brindled, and single colours that create striking and attractive roofs.

We offer:

- ▶ Red
- ▶ Light Mixed Brindle
- ▶ Medium Mixed Brindle
- ▶ Blue Brindle
- ▶ Burnt Red
- ▶ Dark Antique
- ▶ Heather Brindle
- ▶ Russet Mix

Cambrian Slate

Cambrian Slates embody the beauty and character of natural slate. Made in Wales from over 60% recycled Welsh slate, Cambrian tops the range in both looks and performance and has a proven track record even on pitches as low as 15°. Whilst light in weight, Cambrian's unique three-point fixing makes it suitable for even the most exposed sites.

Three distinctive colours are available, and one pre-weathered option exist, each of which stunningly echoes the variation found in natural slate - Slate Grey, Slate Grey Pre-Weathered, Heather or Langdale Green.

CAN BE USED ON
PITCHES AS LOW AS

15°

Planum Clay Tiles

Specially designed for low pitch roofs down to 10°

Double interlocking flat clay roof tile for perfect waterproofing.
Large format. Quick and easy installation.
Slate aesthetic and with great curb appeal.

The clay tiles combine technique, aesthetic natural looking performance and functionality to any new roof. Its graceful and visually appealing dimensions, together with the wide variety of colours and finishes available means that this clay roof tile is the architect's best friend. Manufacturers offer a 100 year materials only, warranty.

Lower absorption and higher frost resistance:

- ▶ Water absorption on Klinker H-Cassette tiles is lower than 5%

Interlocking

- ▶ 45mm interlocking & Large drainage rib.
- ▶ Better watertightness

Nail hole

- ▶ Pre-hole (easy to be nailed)
- ▶ Less tile breakages when nailing

Hook attachment

- ▶ Sawtooth
- ▶ Easy hook fixing



Planum Blackstone Clay Tile



Integrated PV Tile



Truline Dry Ridge / Hip System



Truline Q145 -
suitable for 90° pitch



Truline Q141 -
suitable for 105°-120° pitch



Truline Q120 -
suitable for 120-135° pitch



Truline Q147 Gable End -
to suit Q145



Truline Q142 Gable End -
to suit Q141



Truline Q122 Hip Starter -
to suit Q120

Capco Fibre Cement Slates



Smooth Square Edge Black

Capco Smooth Square Edge slates have a smooth surface with square edges, available in both blue-black and premium black colours. Specifically manufactured with the Irish market in mind, our Smooth Square Edge slates provide all the quality aspects and relevant guarantees that one expects from a leading manufacturer. Conforming to the strongest class, class B in accordance with the European Norm EN 492.

Smooth Square Edge slates come with a 10-year colour guarantee.



Smooth Blue / Black

Capco Smooth Square Edge slates have a smooth surface with square edges, available in both blue-black and premium black colours. Specifically manufactured with the Irish market in mind, our Smooth Square Edge slates provide all the quality aspects and relevant guarantees that one expects from a leading manufacturer. Conforming to the strongest class, class B in accordance with the European Norm EN 492.

Smooth Square Edge slates come with a 10-year colour guarantee.





Smooth PLUS

Capco Smooth Square Edge PLUS slates have a smooth surface with square edges, available in an attractive blue-black colour. Smooth Square Edge PLUS slates conform to the strongest class, class B, in accordance with the European Norm EN 492. Manufactured using the latest painting technology, our slates have a multi-layer acrylic-based coating that counteracts the growth of moss. This finish is unsurpassed for quality and aesthetics.

Smooth Square Edge PLUS slates come with a 20-year colour guarantee.



Textured Riven Edge

Capco Textured Riven Edge slates have a textured surface with dressed edges to recreate the appearance of traditional natural slate. This traditional looking slate is available in blue-black colour or Welsh blue colours and has a multi-layer acrylic-based coating on both the edges and the surface to counteract the growth of moss. Textured Riven Edge slates achieve the highest class, class B in accordance with EN 492.

Supported by a 20-year colour guarantee



CUPA READYSLATE®

The first pre-assembled natural slate roofing system, developed and patented by CUPA GROUP, world leaders in slate production.

The 4-step installation doesn't require a skilled trade or specialised machinery. READYSLATE® modular design ensures complete waterproofing and seamless integration with any existing roof elements.

Light Weight

READYSLATE® modules are lightweight and flexible without losing strength and resistance. It is designed to comply with any building or roofing legal weight requirements.

Easy To Install

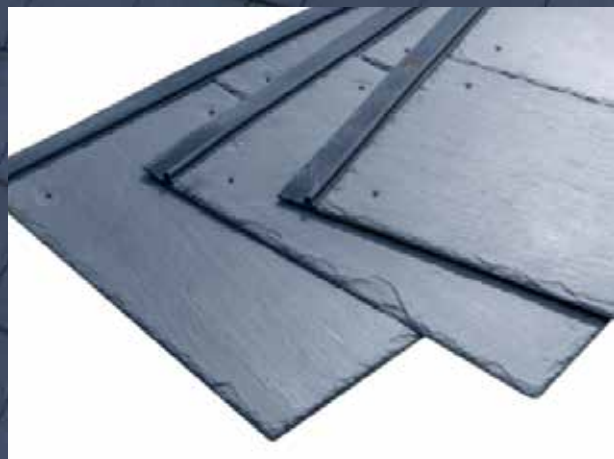
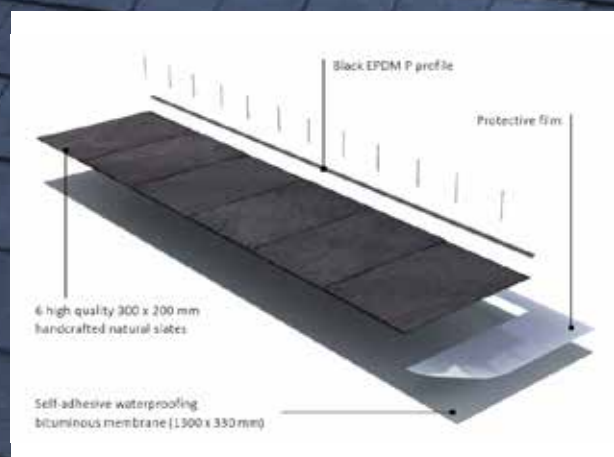
READYSLATE® modules can be installed without hiring a professional tradesperson. Unlike other materials, there is no need for specialised labour.

Quality

READYSLATE® modules are mainly made of natural slate, the most resistant material used for roofing, with a lifespan that last hundreds of years.

Increases Home Value

READYSLATE® modules provide considerable added value to any property. A good roof is an investment as it increases your home's value.





CUPA STONEPANEL™

Natural stone installation system is certified throughout Europe.

CUPA Stone panels are composed of pieces of natural stone mounted on a cement base and reinforced with fiberglass mesh to avoid the risk of them becoming detached. The base measures barely 3 cm (1.18 in), allowing for the easy mounting of slabs and rustic or antiqued blocks. The panels are installed in a Z-shaped form to enhance the cosmetic appearance of the work.

Efficient

Quick & Easy Installation

Safe

Rough and homogeneous cement-based mortar with a patented stainless-steel anchor that enables the installation at height.

High Quality

Integrated coding system implemented in all panels to monitorize manufacturing processes.

Aesthetic

Handmade in "Z" shape to avoid visible joints. Each piece is unique.

Non-Combustible

Fire spread restricted.



SIG Roofing Range



Nordic

A natural grey quartzite with blue tones that adds a fresh and bright touch to renovated and functional spaces.



Sylvestre

Gneiss stone, very light and uniform with a rustic finish. It is perfect to decorate facades or walls with a traditional touch.



Black Slate

Traditional black slate, with dark blue tones, arranged in blocks that transmits a natural, strong, and sober style.



Blue Limestone

With its striking blue-gray colour and unique veining patterns, it adds a touch of sophistication to any architectural or design project

CUPA Stonepanel Range

<https://cupastone.com/stonepanel/>

CUPA Stone Visualizer

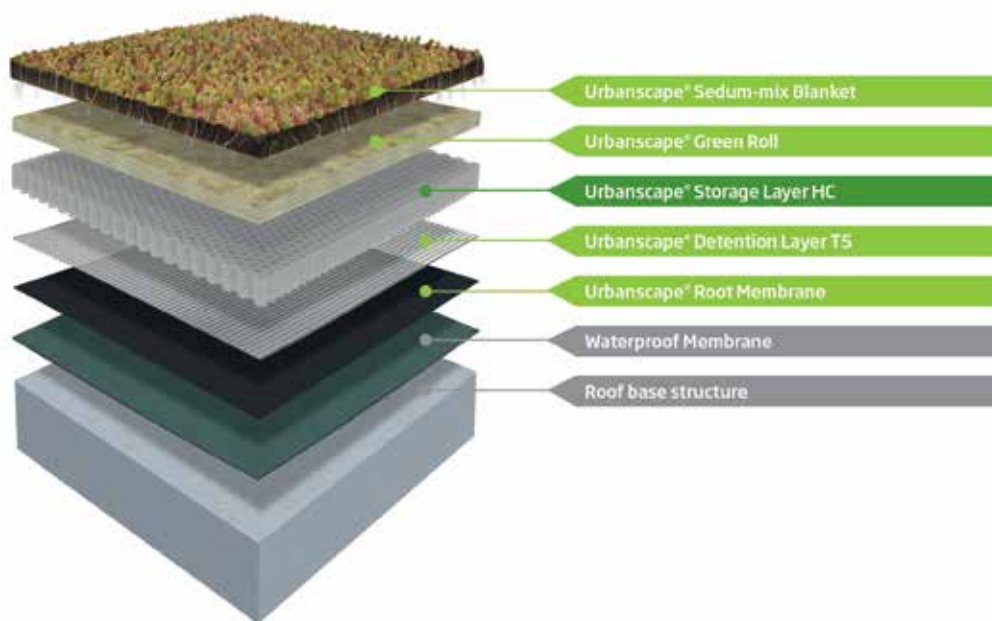
<https://visualizer.cupastone.com/#>



Urbanscape Green Roof

The Urbanscape Green Roof System is an innovative, lightweight system using our high performance, specially designed non-combustible Rock Mineral Wool needle-felt insulation as a growing medium, and a replacement for traditional substrates.

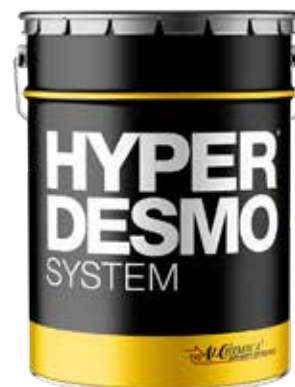
The system offers high water retention capacity, and is designed specifically for green roofs on residential, non-residential and industrial buildings in urban areas.



Flat Roofing

Hyperdesmo Liquid Roofing Membrane

Liquid Roofing is a cold-applied, single component modified Polyurethane, resulting in a seamless, liquid waterproofing membrane that is totally non-hazardous. Liquid Roofing is a firm favourite for Roofers, as it can be applied to almost any roof substrate and is ideal for roofs with complex detail and upstands. It is fully reinforced with a polyester membrane and cures naturally through contact with moisture in the air, creating a waterproofing system suitable for use on both new and remedial projects.



The Roof Trim System

Roof Trim is a fast-fit, high-quality PVC-u edge trim system designed around a high quality finish and the durability to offer an extra-long life. The trim is available in either black or white and comes complete with a PVC-u back plate that removes the need for a standard wooden batten. There is also a thinner back plate included which can be used to mount directly when a standard wooden batten is already in place.



Classic Bond EPDM

EPDM is a durable, long-lasting synthetic rubber roofing membrane that is used on flat and low-pitched roofs. EPDM is available in a choice of widths and thicknesses. It is manufactured in large sheets for excellent coverage with no seams. EPDM brings watertight performance, durability, and elasticity to ensure your roof will be protected, whatever the weather.

Order cut to size for your specific project requirements!

Use our EPDM Calculator to find out what products you need to complete your projects.

classicbond.co.uk/calculator



Roofing Accessories



Accessories



Fibre Cement Ridge

Black or Graphite Angles 75, 90, 105, 120, 135



Clay Plain Angle Ridge

Black, Buff or Red Angles 75, 90, 105, 115, 125, 135



Clay Capped Angle Ridge

Black, Buff or Red Angles 75, 90, 105, 115, 125, 135



Imerys Ogee Interlocking Ridge

Universal Angle & Dry Fixed, Red or Black



Imerys Ogee Spigotted Foot End Ridge

Universal Angle & Dry Fixed, Red or Black



Imerys Ogee Socket End Cap

Universal Angle & Dry Fixed, Red or Black



Imerys Gothic Hip

Universal Angle & Dry Fixed, Red or Black



Imerys Gothic Foot

Universal Angle & Dry Fixed, Red or Black



Concrete Plain Angle Ridge

Black, Graphite or Red Angles 75, 90, 105, 120, 135



Large slate Vent



Uni-line Slate Vent

Black, Grey



15K/20K Universal Tile Vent

Various colours



Accessories



Dura Universal Clay Ridge 410mm
Black, Red



Dura Gable Ridge End



Dura Hip Starter



Dura 135° Hip Tile 410mm



SIG Copper Ridge Roll 6m Roll



Dura Capped Dry Fix Ridge 410mm



Klobber Small Slate Vent
Black



No 2 Tile Trim 55mm Open x 3.0m



Retro-Fit Tile Dry Verge



Underlay Support Tray 1.5m



Valley Trough 3.0m



Perforated Valley Trim 3m

Roofing Accessories



Fixings



Copper Crampions



Clay Roll Top Ridge 75° - 135°
Black, Red, Buff



Ridge Drive Nails



Tex Screws
160mm / 130mm



Copper Nails
30, 35, 38, 40, 50mm



10/25mm Over Fascia Vent 1m



110mm Point Hook



Roll Out Rafter Tray 300mm x 6m



Slaters Tubs
(2000 Nails & 1000 Crampions)

Slate Trims



No.1 Slate Trim, 3mtr,
Black or Graphite



No. 2 Slate Trim, 3mtr,
Black or Graphite



Roofing Membranes

PERMAVENT
INNOVATIVE ROOFING PRODUCTS



Tyvek Supro

- ▶ Extremely water-resistant W1 level
- ▶ Vapour-permeable
- ▶ Full BBA and IAB approval
- ▶ Can be left exposed for up to 4 months



Permavent Red

- ▶ Ultra strong breather membrane
- ▶ 160 g/m²
- ▶ Fully BBA Certified
- ▶ UV stable for 3 months



Permavent Graphite

- ▶ Highly durable
- ▶ 130 g/m²
- ▶ Fully BBA Certified
- ▶ UV stable for 3 months



Permavent Apex

- ▶ Air open and vapour permeable membrane
- ▶ 180 g/m²
- ▶ Integrated tape (25% less membrane usage)
- ▶ Use without ventilation
- ▶ BBA certified
- ▶ UV stable for 3 months



Permavent Dry+

- ▶ High-performance vapour permeable membrane
- ▶ 220 g/m²
- ▶ Tested and certified UV stable for 3 months
- ▶ Usable in all Wind Zones (taped and battened lap)
- ▶ Forms part of the Easy Roof System to qualify for the 40 Year Easy Roof Guarantee
- ▶ Specially designed for low pitch applications

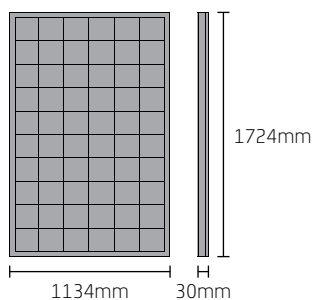


Easy Slate / Tile

- ▶ Low pitch system for slates and plain tiles
- ▶ Pitch as low as 12° with natural slate and 10° with fibre cement slates
- ▶ Can be installed with the vast majority of slates
- ▶ 40-year product guarantee

PV InDaX Adapt

Based on proven crystalline technology, the PV InDaX Adapt in-roof photovoltaic system offers high output performance in an attractive and weathertight roof covering. The panel sits in line with the surrounding tiles, creating an improved aesthetic and weathertight system.



Features and Benefits

- ▶ Low overall system height with modules mounted in attractive black coated aluminium framing
- ▶ Safe, flexible and quick assembly
- ▶ Wide pitch range capability
- ▶ Maximum energy yield
- ▶ Weathertight and resistant to high wind uplift
- ▶ Fully MCS and BBA certified
- ▶ 25-year power output guarantee

Product Data

Power Output	415Wp
Solar Cells per Module	108
Cell Type	Monocrystalline
Front Panel	AR Coated Heat Strengthened Glass
Backside Panel	Laminated Thermoplastic
Framing	Black Polypropylene
Module Dimensions	1724 x 1134mm
Thickness	30mm (approx)
Weight	21.5kg (approx)

Compatibility

Compatible with all BMI Redland tiles and slates and similar profiles.

Alumasc

Alumasc is one of the UK's leading manufacturers of aluminium and cast iron products for the construction industry. Our expertise in aluminium casting, extrusion and fabrication, as well as iron castings, stems from a proven track record accumulated over 60 years, enabling the provision of unrivalled technical support for designers, specifiers and contractors.

Traditional Aluminium Heritage System

A stock range of traditional cast aluminium gutter profiles (half round, beaded half round, beaded deep run, victorian ogee and moulded), and traditional extruded aluminium pipework (round, square or rectangular), all in a choice of sizes and supported by a full range of fittings. Can be finished to replicate cast iron, or with BBA certificated powder coatings in a wide range of colours.

Contemporary Aluminium

Aqualine Gutter System

An extruded, high-capacity gutter system in five alternative styles, Innovative secret fix bracketry

GX Gutter System

A pressed gutter system designed for traditional wet jointing on site. Offered in three profiles (joggle, smooth and moulded).

AX Gutter System

An extruded aluminium gutter system designed for traditional wet jointing on site. AX gutters are available in 3 profiles and a choice of sizes.

Flushjoint Downpipe System

A range of extruded round, square and rectangular downpipes with concealed spigots, giving a smooth, clean appearance.

Swaged Downpipe System

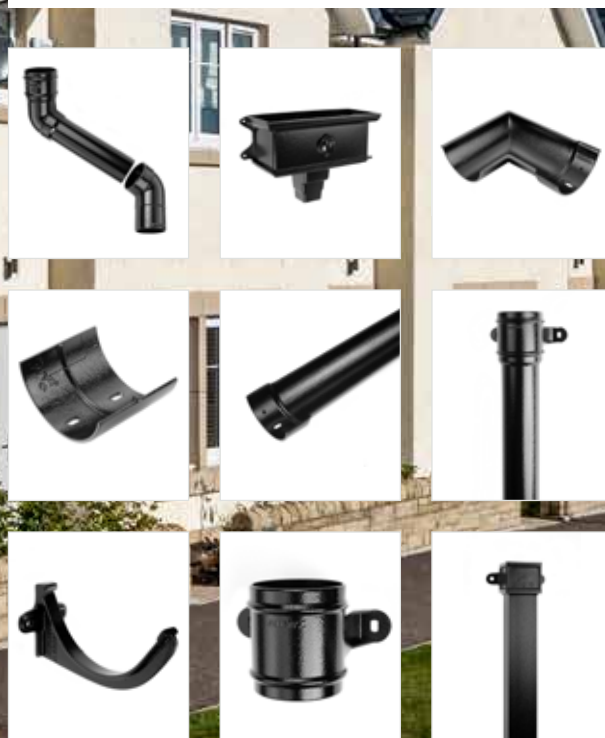
An economical metal downpipe system with circular pipes available in a choice of three diameters.

Guardian Downpipe System

A range of extruded flush fitting security pipes with concealed brackets and concealed jointing in a choice of profiles.

Cast Iron Apex Heritage System

A comprehensive, traditional range of four gutter and three downpipe profiles, all in a variety of sizes, together with associated fittings and accessories. The gutters include a choice of half round, beaded half round, victorian ogee and moulded. The downpipes are circular, square or rectangular. The system is available in a range of 8 standard colour options in a high quality two-pack epoxy primer and top coat finish.





VELUX®

Why VELUX®?

All over the world, VELUX roof windows contribute to healthy indoor environments by letting in fresh air and daylight. VELUX roof windows are homeowner and installer favourites for a reason.

From ever-popular centre-pivot and top-hung roof windows, to solar- and electric-powered VELUX INTEGRA® options, and new 3-in-1 integrated solutions, there has never been a wider choice of VELUX roof windows.

Achieve the best project results by ensuring the glazed area of all windows is no less than 20% of the floor area of the room.

It's never been easier to achieve the right amount of daylight and natural ventilation in any loft conversion, extension, renovation or building project.



VELUX Low Pitch roof window

Low pitch, high quality.

Perfect for bringing daylight and fresh air into single-storey extensions, the brand new Low Pitch roof window is the best solution for roofs with a pitch between 10°-20°.

The product is designed to be totally watertight at a low pitch and features glass-to-edge technology which provides a seamless and aesthetically pleasing installation.

- ▶ Tested in northern Europe's largest wind tunnel for wind and water resistance
- ▶ Fast and simple installation
- ▶ Suitable for profiled tiles from 15mm up to 120mm which are approved for roof pitches from 10°-20°

The Low Pitch roof window (code: GBL) is available in 7 sizes, in manual operation with a white painted finish.



Lindab

The superior steel rainwater system.

Lindab's steel rainwater system has proved itself to be the most environmentally friendly material available, with a natural place in today's approach to green sustainability.

Rainline is made from high-performance steel produced by the top European manufacturers. This high-performance steel ensures that Rainline is lightweight, durable and long-lasting, making it the gutter system of choice for both domestic and commercial use.





MINIMUM HEADLAP FOR FIXING SLATES WITH NAILS OR HOOKS

Sheltered/Moderate exposure (less than 56.5l/m ²)										
Size (mm)	Rafter Pitch									
	20°	22.5°	25°	27.5°	30°	35°	40°	45° to 75°	85°	
600x300	-	-	95	85	80	70	60	55	50	
500x300	115	105	95	85	80	70	60	55	50	
500x250	-	-	95	85	80	70	60	55	50	
450x250	-	-	-	-	80	70	60	55	50	
400x250	-	-	-	-	80	70	60	55	50	
400x200	-	-	-	-	80	70	60	55	50	
350x250	-	-	-	-	80	70	60	55	50	
350x200	-	-	-	-	80	70	60	55	50	
300x200	-	-	-	-	80	70	60	55	50	

Please note that hook fixings should not be used on any pitch below 25°.

Severe/Very severe (56.5l/m ² or greater spell)										
Size (mm)	Rafter Pitch									
	20°	22.5°	25°	27.5°	30°	35°	40°	45° to 75°	85°	
600x300	-	-	120	110	100	85	80	70	65	
500x300	-	130	120	110	100	85	80	70	65	
500x250	-	-	-	110	100	85	80	70	65	
450x250	-	-	-	-	100	85	80	70	65	
400x250	-	-	-	-	100	85	80	70	65	
400x200	-	-	-	-	100	85	80	70	65	
350x250	-	-	-	-	100	85	80	70	65	
350x200	-	-	-	-	100	85	80	70	65	
300x200	-	-	-	-	100	85	80	70	65	

Please note that hook fixings should not be used on any pitch below 25°.

PITCH OF ROOF

When considering the minimum pitch for a slated roof it is necessary to establish the exposure of the site, the length of rafter and the height of the building. The recommendations shown above are based on a maximum height to eave of 12m and a maximum rafter length of 9m in moderate exposure and 6m in severe exposure.

RIAI APPROVED SEMINARS

CUPA PIZARRAS provide architects and designers free CPD seminars on slate roofing, flooring and cladding. If you would like to find out more please contact +353 1 623 4541.



SLATE COVERAGE

This table explains the required measurements for effective coverage.

Slate Coverage												
Slate Size	Lap mm											
	50	65	75	80	90	100	110	115	120	130	140	150
600 x 300	12.1	12.5	12.7	12.8	13.1	13.3	13.6	13.7	13.9	14.2	14.5	14.8
500 x 300	14.8	15.3	15.7	15.9	16.3	16.7	17.1	17.3	17.5	18.0	18.5	19.0
500 x 250	17.8	18.4	18.8	19.0	19.5	20.0	20.5	20.8	21.0	21.6	22.2	
450 x 300	16.7	17.3	17.8	18.0	18.5	19.0	19.6	19.9	20.2	20.8	21.5	
450 x 250	20.2	20.8	21.3	21.6	22.2	22.9	23.5	23.9	24.2	25.0	25.8	
450 x 230	21.7	22.6	23.2	23.5	24.2	24.8	25.6	26.0	26.3	27.2	28.1	
400 x 300	19.0	19.9	20.5	20.8	21.5	22.2	23.0	23.4	23.8			
400 x 250	22.9	23.9	24.6	25.0	25.8	26.7	27.6	28.1	28.6			
400 x 200	28.6	29.9	30.8	31.3	32.3	33.3	34.5	35.1	35.7			
350 x 300	22.2	23.4	24.2	24.7	25.6	26.7	27.8					
350 x 250	26.7	28.1	29.1	29.6	30.8	32.0	33.3					
350 x 200	33.3	35.1	36.4	37.0	38.5	40.0	41.7					
320 x 220	33.7	35.7	37.1	37.9	39.5	41.3	43.3					
320 x 180	41.2	43.6	45.4	46.3	48.3	50.5	53.0					
300 x 200	40.0	42.6	44.4	45.5	47.6	50.0						
300 x 150	53.3	56.7	59.3	60.6	63.5	66.7						

To calculate the weight per square metre, simply multiply the weight per slate given below by the number of slates per square metre for the same slate listed above. For example; 500 x 250mm slate (4–5mm thick) = 1.889 kg x 18.8 (at 75mm lap) = 35.51kg per square metre.

Weight per slate in Kilogrammes		
Slate Size	Thickness	
(Nominal) mm	4–5mm	6–7mm
600 x 300	2.495	3.899
500 x 300	2.416	3.290
500 x 250	1.889	2.760
460 x 220	1.266	1.848
400 x 300	1.784	2.690
400 x 200	1.098	1.809
350 x 200	0.910	1.675
300 x 200	0.896	1.138

The values shown in the Slate Coverage chart above are calculated using nominal sizes and incorporate a 5mm jointing gap. We recommend the addition of at least 5% wastage allowance.

Hole Gauge Per Slate													
Slate Size	Thickness												
(Nominal) mm	50	65	75	80	90	100	110	115	120	130	140	150	
600	340	348	353	355	360	365	370	373	375	380	385	390	
500	290	298	303	305	310	315	320	323	325	330	335	340	
400	240	248	253	255	260	265	270	273	275	280			
350	215	223	228	230	235	240	245	248					
300	190	198	203	205	210	215							

*Measurements should be taken from the tail of the slate.

SIG Roofing – Metal Roofing

SIG can offer Steel or Aluminium Roof options for any build. Whether you are looking for a traditional Corrugated roof or a modern contemporary Standing Seam Panel finish, SIG Roofing can supply. Choose from several classic and modern colours. No matter what style you settle on, you will get a beautiful, durable, and easy-care roof that looks attractive for many years to come.

All systems come with corrosion and colour warranties. Systems can be used as low as 12°.

SIG Roofing can offer the full roof build-up including flat roof insulation, air and vapour control layers, breather membranes and accessories.

U-value calculations on all build ups available from SIG Technical.



SIG Ireland's Largest Provider of Specialist Building Products and Technical Expertise



LEFT TURN WEIGHT LIMIT

No vehicles over maximum gross weight of 7.5 tonnes
VEHICLES MUST KEEP RIGHT
except to turn left

TRADE COUNTER & COLLECTIONS
←

TRUCKS ONLY

TRADE COUNTER & COLLECTIONS
←



MEMBERS OF



Belfast

8 Balmoral Road,
Balmoral Industrial Estate,
Belfast BT1 26QA

T: +44 28 9038 0060
E: belfastsales@sig.ie

Omagh

Unit B2, Killybrack Business Park,
3 Killybrack Road, Omagh,
Co. Tyrone BT7 97DG

T: +44 28 8224 6220
E: omaghsales@sig.ie

Dublin

Turnpike Road,
Ballymount,
Dublin D22 P5r7

T: +353 1 623 4541
E: dublinsales@sig.ie

Limerick

Unit D3
Eastway Business Park
Ballysimon Road
Limerick V94 RDD4

T: +353 61 531 381
E: limericksales@sig.ie

Cork

Unit 1, Doughcloyne Industrial Estate,
Sarsfield Road, Wilton,
Cork T12 W578

T: +353 21 432 1868
E: corksales@sig.ie



Website
www.sig.ie

Webstore
store.sig.ie